



MADHAV INTERNATIONAL SCHOOL

Affiliated to the Council for Indian School Certificate Examinations (CISCE) - GU031/2014
Pranaminagar, Vastral, Ahmedabad-382418, Gujarat
Ph. +91-079-29292753 | Email: admin@madhavinternationalschool.org

Diwali Assignment (2016-17)

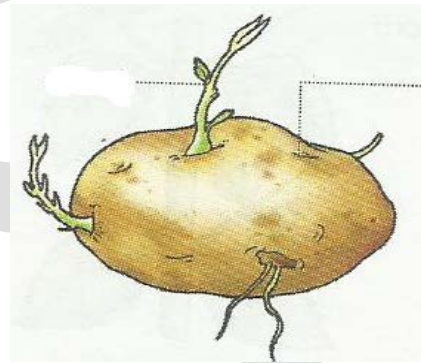
GRADE -6

(Biology)

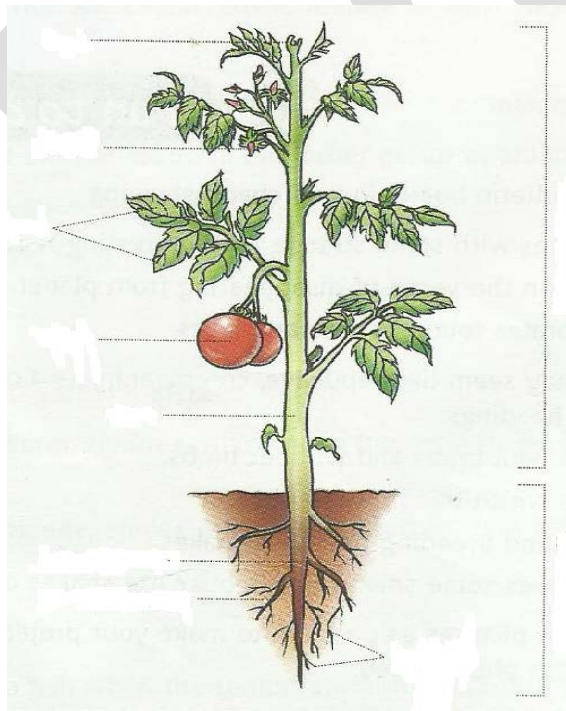
NAME: _____
Roll No: _____

Date: _____

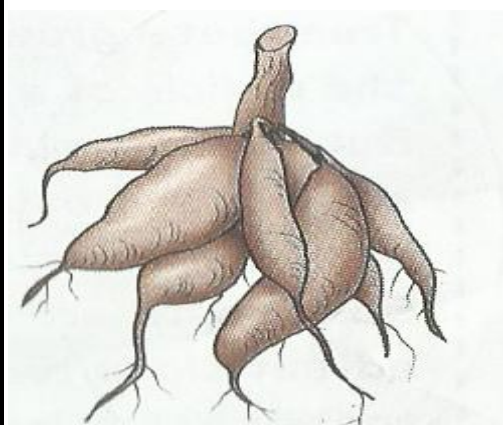
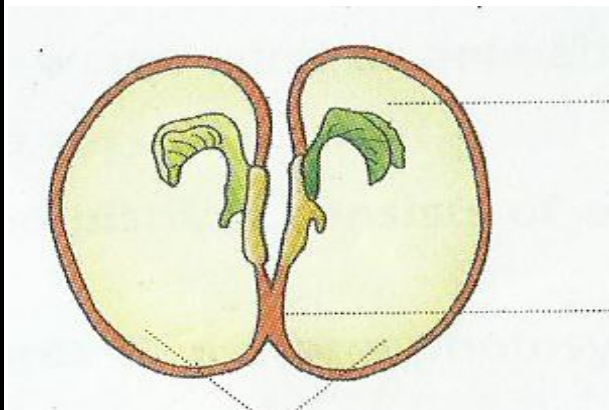
(1) Look at the diagram and name them:



(2) Name the parts of a Tomato Plants.



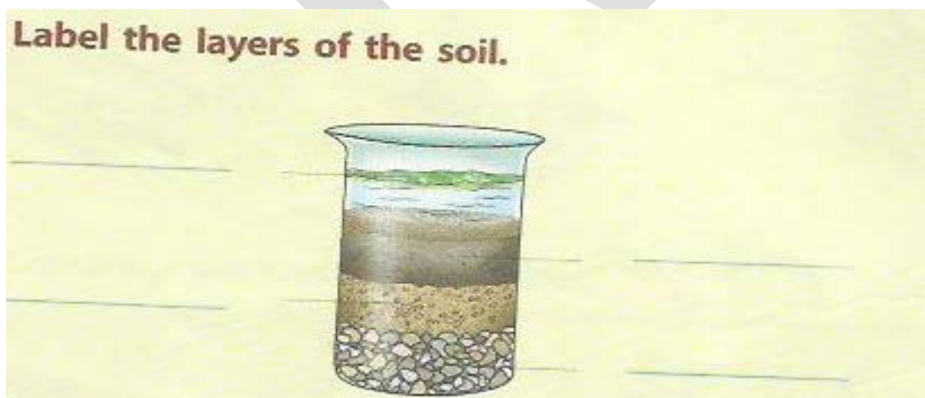
(3) Look at the diagram and name them:



(4) Draw the concept map of Plant kingdom and Animals.

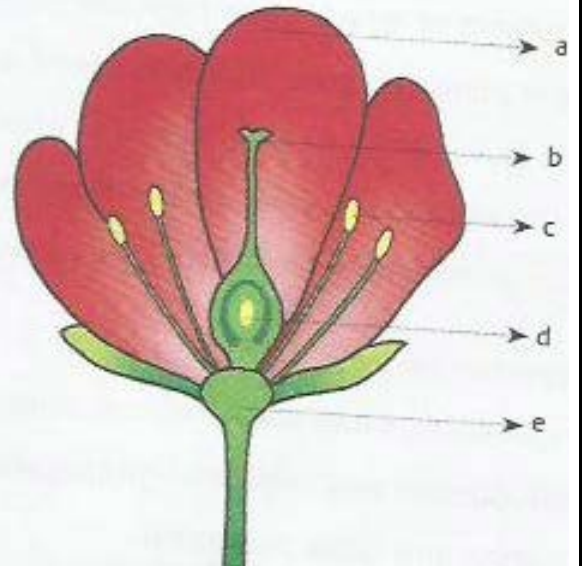
(5)

Label the layers of the soil.



The diagram illustrates the structure of a flower.

1. Identify the parts labelled a–e.
2. Which part produces pollen grains?
3. Which part receives pollen for pollination?





MADHAV INTERNATIONAL SCHOOL

Affiliated to the Council for Indian School Certificate Examinations (CISCE) - GU031/2014
Pranaminagar, Vastral, Ahmedabad-382418, Gujarat
Ph. +91-079-29292753 | Email: admin@madhavinternationalschool.org

DIWALI VACATION Chemistry Assignment

NAME: _____ **Roll No:** _____ **Date:** 06/11/2016

Q.1 Write the formulae with the help of hit and trial method of the compounds.

1. Hydrogen chloride
 2. ammonium chloride
 3. calcium chloride
 4. Aluminium chloride
 5. Zinc Chloride
 6. Magnesium chloride
 7. Copper chloride
 8. Sodium chloride
 9. lead (II) chloride
 10. Iron (II) chloride
 11. Iron (III) chloride
 12. Cobalt chloride
 13. Silver chloride
 14. Manganese chloride
 15. Mercury chloride
 16. Tin (IV) Chloride
 17. Tin (II) chloride
 18. Potassium chloride
 19. Phosphorous (III) chloride
 20. Carbon tetrachloride
- Sulphates
21. Sodium sulphate
 22. Calcium sulphate
 23. Copper sulphate
 24. Magnesium sulphate
 25. Aluminium sulphate
 26. lead (II) sulphate
 27. Potassium sulphate
 28. Ammonium sulphate
 29. zinc sulphate
 30. Sulphuric acid

Hydroxides

31. Iron (II) hydroxide
32. Iron (III) hydroxide
33. Lead (II) hydroxide
34. Calcium hydroxide
35. zinc hydroxide
36. Copper hydroxide
37. Ammonium hydroxide
38. Sodium hydroxide
39. Potassium hydroxide
40. Aluminium hydroxide

Carbonates

1. Sodium carbonate
2. Potassium carbonate
3. copper (I) carbonate
4. Aluminium carbonate
5. Lead (II) carbonate
6. Calcium carbonate
7. Sodium hydrogen carbonate
8. Potassium hydrogen carbonate
9. zinc carbonate
10. Carbonic acid

Nitrates

11. Sodium nitrate
12. Potassium nitrate
13. Copper nitrate
14. Ammonium nitrate
15. Lead (II) nitrate
16. Nitric acid
17. Ammonia
18. silver nitrate
19. Calcium nitrate
20. Magnesium nitrate

21. Oxides

22. Sodium oxide
23. Potassium oxide
24. Copper oxide
25. Magnesium oxide
26. lead (II) oxide
27. Aluminium oxide [alumina]
28. Silicon dioxide [Silica]
29. Iron (II) oxide
30. Iron (III) oxide
31. Manganese (IV) Oxide
32. Calcium oxide [Quick lime]

Q.2 Write the formulae of followings.

33. Hydrochloric acid
34. Sulphuric acid
35. Nitric acid
36. Carbonic acid
37. Sulphurous acid
38. Phosphoric acid
39. Acetic acid
40. Sodium thiosulphate
41. sodium zincate
42. potassium aluminate
43. Water
44. common salt
45. Blue vitriol
46. Methanol
47. Methane
48. Butane
49. Methyl mercaptan
50. Glucose
51. Oxalic acid



MADHAV INTERNATIONAL SCHOOL

Affiliated to the Council for Indian School Certificate Examinations (CISCE) - GU031/2014
Pranaminagar, Vastral, Ahmedabad-382418, Gujarat
Ph. +91-079-29292753 | Email: admin@madhavinternationalschool.org

Diwali Worksheet-(2016-17)

GRADE -6 (Computer)

Notes : Prepare a file, write the questions along with answers in two sides of paper. Prepare a presentation on any one topic; bring in pen-drive or CD.

Q1 Answer the following questions

1. Draw a flowchart of the following :
 - Find the sum, average and product of any three given numbers.
 - Steps required to switch on a computer
 - Steps required to shutdown a computer
 - To print the squares of all numbers from 1 to 10
2. Write a QBASIC program to draw the following shapes
 - Square
 - Rectangle
 - Circle
 - Line

Q2. Prepare a presentation on any one

1. Input and Output Devices of Computer.
2. Generations of a Computer Language.
3. Photo Album of your any relatives function.

THE END



MADHAV INTERNATIONAL SCHOOL

Affiliated to the Council for Indian School Certificate Examinations (CISCE) - GU031/2014
Pranaminagar, Vastral, Ahmedabad-382418, Gujarat
Ph. +91-079-29292753 | Email: admin@madhavinternationalschool.org

Diwali Worksheet-(2016-17)

GRADE -6 (Computer)

Notes : Prepare a file, write the questions along with answers in two sides of paper. Prepare a presentation on any one topic; bring in pen-drive or CD.

Q1 Answer the following questions

1. Draw a flowchart of the following :
 - Find the sum, average and product of any three given numbers.
 - Steps required to switch on a computer
 - Steps required to shutdown a computer
 - To print the squares of all numbers from 1 to 10
2. Write a QBASIC program to draw the following shapes
 - Square
 - Rectangle
 - Circle
 - Line

Q2. Prepare a presentation on any one

1. Input and Output Devices of Computer.
2. Generations of a Computer Language.
3. Photo Album of your any relatives function.

THE END



MADHAV INTERNATIONAL SCHOOL

Affiliated to the Council for Indian School Certificate Examinations (CISCE) - GU031/2014
Pranaminagar, Vastral, Ahmedabad-382418, Gujarat
Ph. +91-079-29292753 | Email: admin@madhavinternationalschool.org

Diwali vacation homework

Grade - 6

Subject-math

- Solve the following problems.
 1. CP= Rs. 1000, SP = Rs1500, find profit or loss.
 2. CP= Rs 1200, SP= ?, Loss = Rs. 3600
 3. By selling a scooter at Rs 26920, a dealer suffers a loss of Rs 1578. Find his cost price.
 4. CP= Rs1000, SP =RS800. Find rate of profit or loss?
 5. The cost price of a bicycle is Rs 1920. It was sold at a loss of 20%. Find the selling price of a bicycle.
 6. An articles was sold for Rs300 with a profit of 25%. What was its cost price?
 7. A shopkeeper buys 20 pens for Rs100 and sells them at the rate of Rs10 per pen. Find his gain per cent.
 8. An item was sold for Rs540 at a loss of 5%. What was its cost price?
 9. Find the simple interest on Rs 2000 at 1.5% per month and for $3/2$ years?
 10. Rs7500 is borrowed at $15/2\%$ rate of interest p.a for 3 years. Find the amount to be paid at the end of 3 years?
 11. What sum will yield an interest of Rs750 for 2years at the rate of $25/3\%$ p.a?
 12. I= Rs280, p= Rs56000, t=2 years 6 months, fond R=?
 13. P=Rs640, I=Rs40, R= $25/2\%$ p.a, find t.



MADHAV INTERNATIONAL SCHOOL

Affiliated to the Council for Indian School Certificate Examinations (CISCE) - GU031/2014
Pranaminagar, Vastral, Ahmedabad-382418, Gujarat
Ph. +91-079-29292753 | Email: admin@madhavinternationalschool.org

Name : _____

DIWALI VACATION WORKSHEET

Roll No : _____

Grade :6

Sub: Physics

Date :27/10/2016

• Solve the following problems:

1. A boy lifts a bucketful of water weighing 90 N from a well through a height of 7 m. What is the work done by him?
2. What is the work done by a porter standing with a weight of 250 N on his head?
3. A man pushes an object through a distance of 4.2 m and does 1050 J of work in the process. How much force did he apply?
4. Gappi uses a force of 45 N in pulling a roller along the floor. Work done by him is 1800 J. Calculate the distance moved by him in the direction of the force.
5. What is the pressure exerted by a truck weighing 5,00,000 N if the area of the tyres in contact with the ground is 0.4 m^2 ?
6. An elephant of weight 25,600 N stands on four feet. Find the pressure exerted on the ground if the area of each foot is approximately 250 cm^2 . Give your answer in SI units.
7. A force of 300 N acts on a bullet of area of cross-section 0.6 cm^2 . Find the pressure on the bullet.
8. A brick weighing 24 N lies on one side. Find the area of its base if it exerts a pressure of 800 Pa on the ground.
9. A box exerts a pressure of 10,000 Pa on an area of 0.05 m^2 . Find the weight of the box.
10. A dimensions of one heel of a shoe worn by a girl is 1.5 cm x 1cm . The pressure exerted on the ground when she is standing on one heel is 300 N/cm^2 Find the weight of the girl.
11. A force 200 N acts on an area of 0.02 m^2 . Find the pressure in Pa,
12. What force will exerted a pressure of 50000 Pa on an area of 0.05 m^2 ?
13. Find out the area of a body which experience a pressure of 50000 pa by a force of 100 N.
14. Calculate the magnitude of force which produces a pressure of 3500 Pa while acting on a surface of area of cross section of 0.25 m^2 .
15. A force of 100 N acts on an area 0.16 m^2 . What is the magnitude of pressure?